

hama®

W I R E L E S S L A N

WLAN USB Stick 300 Mbps

Ⓒ Instruction manual



00053132

Table of Contents

Introduction	3	Establishing a WLAN connection for XP, Vista / 7	30
Introduction	3	Connecting with the help of the "Hama Wireless LAN Utility"	30
Information on this user manual	3	Establishing a WLAN connection for Windows 8	33
Copyright	3	Deinstalling under Windows XP, Vista / 7	36
Warnings	4	Deinstalling under Windows 8	37
Intended use	4	Troubleshooting	38
Liability disclaimer	4	Appendix	40
Safety instructions	5	Technical data	40
Disposal	5	Support and contact information	41
Description	6	For defective products	41
Scope of supply	6	Internet/World Wide Web	41
Device elements	6	Support hotline – Hama product support	41
Function LED	7	Notes on the EC Declaration of Conformity	41
Requirements for operation	7	Operating restrictions	41
Connecting/disconnecting the device	8		
Inserting the USB WLAN stick	8		
Removing the USB WLAN stick	8		
Installation under Windows	9		
Installing the driver and configuration software	9		
Configuration under Windows XP, Vista / 7	17		
Starting the configuration programme	17		
Description of the configuration programme	18		
"Available Networks detail view"	19		
"Link information detail view"	20		
"Profile List" detail view	22		
"Profile configuration"	23		
"Wi-Fi Protected Setup"	26		

Introduction

Introduction

Dear Customer,

By purchasing this device, you have decided in favour of a quality product from **Hama** which corresponds to the latest state of development with respect to technology and functional performance.

Read all the information contained here to quickly familiarise yourself with the device and to be able to make full use of its functions.

We would like to wish you much pleasure while using it.

Information on this user manual

This user manual forms an integral part of the WLAN USB stick and contains important information on the intended use, safety, connection of the device and the configuration of the software.

Keep this user manual in a safe place and pass it on to any future owners of the device.

Copyright

This documentation and the enclosed software is protected by copyright.

Any duplication or reprinting of this documentation, in whole or in part, and the reproduction of the illustrations even in modified form is only permitted with the written approval of the manufacturer.

Hama grants the buyer the non-exclusive right to use the enclosed software for the operation of the device. The Licensee may only make one copy of the software, which is only to be used for backup purposes.

Unless otherwise indicated, all trademarks and logos mentioned are copyrighted trademarks of Hama GmbH.

Microsoft, Windows and the Windows logo are trademarks of Microsoft Corporation. All other product and company names are trademarks of their respective owners.

Warnings

The following warnings are used in this user manual:

CAUTION

A warning of this category indicates potential material damage.

If the situation is not avoided, it may lead to material damage.

▶ Follow the instructions in this warning to avoid material damage.

NOTE

▶ A note contains additional information to simplify the use of the device.

Intended use

This device is intended only for establishing a data connection from a computer with the help of the enclosed software via a WLAN (Wi-Fi network) using a WLAN router or via some other WLAN-compatible device. Any use other than previously stated is considered as improper use.

No claims of any kind will be accepted for damage resulting from use of the device for other than its intended purpose. The risk must be borne solely by the device owner.

Liability disclaimer

All technical information, data and instructions on installation, operation of the device contained in this user manual represent the current status at the time of printing and are based on the best possible knowledge gained by experience and know-how.

The manufacturer assumes no liability for damage or injury resulting from failure to observe the user manual, use for other than the intended purpose, unprofessional repairs, unauthorised modifications or use of non-approved spare parts.

Safety instructions

When using the device, observe the following safety precautions to avoid any damage or injuries:

- Do not allow children to play with the device. The device and the protective cap can be easily swallowed by children.
- Inspect the device for visible signs of damage before use. Do not use a damaged device.
- Do not open the device. Unauthorised opening and repairs can lead to considerable danger for the user of the device. Only allow qualified persons to carry out repairs. Improper repairs will invalidate the guarantee.
- Protect the device against moisture and penetration by liquids.
- Clean the housing of the device with a slightly damp cloth. Do not use any aggressive or abrasive cleaning agents or solvents.

Disposal

CAUTION

Do not dispose of the device as normal household waste. Pay attention to the disposal instructions in the user manual appendix.



Recycling the packaging material for further use saves raw materials and reduces waste. When no longer required, dispose of the packaging materials according to local environmental regulations.

NOTE

- Keep the original packaging during the guarantee period in order to be able to pack the device properly in the event of a guarantee claim.

Description

This device is a WLAN network adapter with high data transmission rate for use with the Universal Serial Bus (USB).

The device allows you to connect your computer directly to a WLAN access point or WLAN router. You can also connect your computer to other WLAN devices. This increases mobility and makes use of all advantages of wireless connections, high transmission speed and high-speed connections with maximum operational security.

Scope of supply

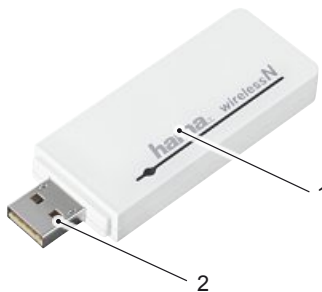
As standard, the device is supplied with the following components:

- WLAN USB stick with protective cap
- USB 2.0 extension cable
- Driver/instructions CD-ROM
- Short user manual

NOTE

- Inspect the contents of the package for completeness and obvious signs of damage. Report incomplete or damaged items to your supplier/retailer immediately.

Device elements



- 1 Housing
- 2 USB plug

Function LED

The function LED installed in the device flashes when accessing the network.

Requirements for operation

The following requirements must be met for installation and operation of the device on your computer:

- A free USB port on the computer.

NOTE

- ▶ A USB 2.0 port is recommended, USB 1.1 functions with a reduced data rate.

- A computer with one of the following operating systems installed:
 - Microsoft® Windows 8 (32-bit or 64-bit edition),
 - Microsoft® Windows 7 (32-bit or 64-bit edition),
 - Microsoft® Windows Vista (32-bit or 64-bit edition),
 - Windows XP® (32-bit or 64-bit edition)
(Service Pack 3 or higher recommended).
- Pentium-class computer or notebook (500 MHz CPU or better).
- At least 256 MB RAM and 50 MB free hard disk space.
- A CD-ROM drive.

NOTE

- ▶ If you wish to connect additional computers to the WLAN, you need additional WLAN USB sticks.

Connecting/disconnecting the device

Inserting the USB WLAN stick

- ◆ Switch on your computer and insert the device into a free USB port or USB hub connected to the computer.



CAUTION

Do not use excessive force when inserting the WLAN USB stick into the port. This could result in damage to the USB port of your computer.

- ▶ Check whether the USB stick fits the other way round.

CAUTION

The USB port or your laptop can be damaged by the protruding USB stick.

- ▶ Use the USB extension cable supplied for connecting to a laptop.

Removing the USB WLAN stick

- ◆ After shutting down the computer, pull the USB WLAN stick out of the USB port of the computer.

CAUTION

Possible data loss when writing to a network drive.

If the WLAN USB stick is removed during a data transfer, data may be lost when writing data to the network drive.

- ▶ Close all open programmes to ensure that all application data has been saved.
- ▶ Shut down the computer correctly before removing the USB WLAN stick.

Installation under Windows

In order to install the WLAN USB stick onto your computer, the following steps must be performed in the specified order:

- 1) Install the driver and the configuration software using the installation programme on the CD supplied with the device.
- 2) Reboot the computer.
- 3) Insert the WLAN USB stick.
- 4) Configure the device.

NOTE

Before starting the installation, observe the following instructions:

- ▶ Use a USB 2.0 port for the optimum performance of the device.
- ▶ Save all data and close all running application programmes.
- ▶ If you already have another version of the drivers and configuration software installed on the computer, uninstall these first.

Installing the driver and configuration software

The following describes the installation of the driver and the configuration software for the Windows XP, Windows Vista and Windows 7 and Windows 8 operating systems.

NOTE

- ▶ The display of the menus may differ according to operating system. The following illustrations relate to a clean installation of the respective operating system.

- ◆ Place the programme and driver CD supplied into the CD drive of your computers. The installation programme starts automatically.

NOTE

- ▶ If you have deactivated the autoplay function and the installation programme does not start automatically, start the installation programme by double-clicking the "autorun.exe" file in the main directory on the CD.

Windows 8

- ▶ Just after inserting the CD-ROM, the following text appears: "Tap to choose what happens with this disk". Click this accordingly.

WINDOWS VISTA/WINDOWS 7/8

- ▶ Execution of the "autorun.exe" programme under Windows Vista, Windows 7 and Windows 8 must be confirmed manually. Click the "Run autorun.exe" icon.

The main menu of the installation programme is displayed.



- A – Select language German, English, French
- B – Other languages
- C – Exit programme

- ◆ Select your preferred language for installation by clicking one of the displayed languages (A). For more installation languages, click button (B).
- ◆ If you wish to cancel the installation, click the "Exit / Beenden / Terminer" (C) button.

NOTE

- ▶ The following examples are based on the English language version.

The main menu of the installation programme is displayed.



- A – Start installation; Windows 8, XP, Vista, 7
- B – Display User Guide
- C – Download updated drivers
- D – Install Adobe Reader
- E – Back to the "Welcome" page

- ◆ Click the button (A) that corresponds to your Windows version to start installing.
- ◆ To display the more detailed users guide in PDF format, Click the button (B) and subsequently double-click the PDF-file.

NOTE

- ▶ A PDF reader is required to display the users guide in PDF format. If a PDF reader is not already installed on your computer, you can install from the CD. Click the button (D) for this purpose.

- ◆ Click the button (C) to download the latest drivers from the Hama website.
- ◆ Click the button (E) to return to the "Welcome" page.

The InstallShield Wizard or the device driver installation wizard is loaded after starting the installation.

NOTE

- ▶ Loading the InstallShield Wizard can take a few seconds. Please wait until the InstallShield wizard has started.

WINDOWS VISTA/WINDOWS 7/8

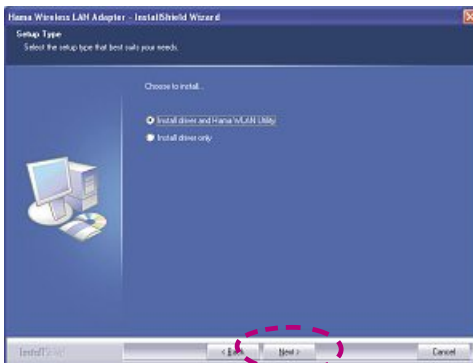
- ▶ Under Windows Vista, Windows 7 and Windows 8, click "Continue" respectively "Yes" in the "User Account Control" dialogue.

Further steps during installation under Windows XP/Vista/7

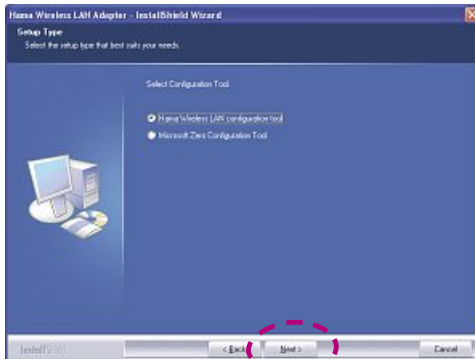
The first page of the InstallShield wizard is displayed.



- ◆ Read the license agreement.
- ◆ Click "I accept the terms of the license agreement".
- ◆ Click "Next".



- ◆ Mark "Install driver and Hama WLAN Utility".
- ◆ Click "Next".

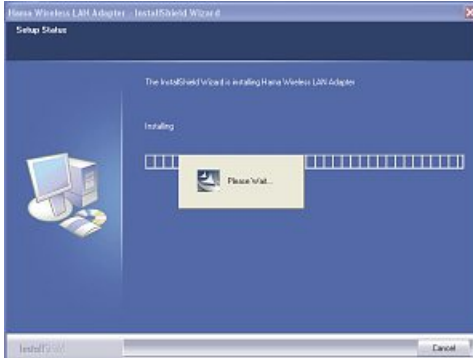


- ◆ Mark "Hama wireless LAN configuration tool".
- ◆ Click "Next".



- ◆ Click the "Install" button to start the Installation.

The installation files are now decompressed for installation.

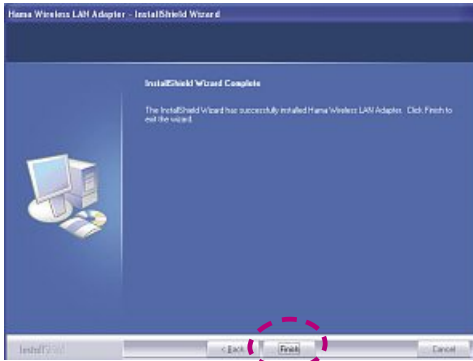


The drivers and the configuration software are installed on your computer.

NOTE

- ▶ Depending on the operating system, several components are installed here.

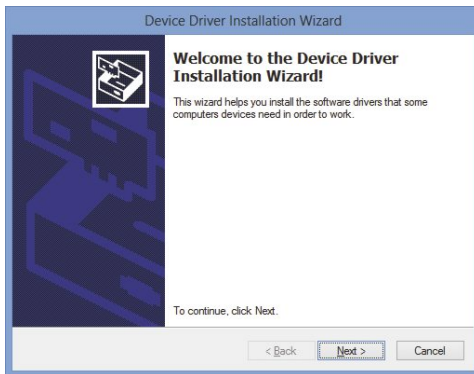
After completing the installation, the computer must be restarted.



- ◆ Click the "Finish" button to finish installing and restart the computer.

Further steps during installation under Windows 8

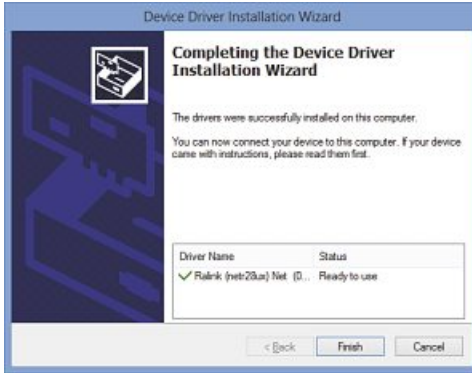
The opening page of the device driver installation assistant is displayed.



- ◆ Click "Next".
- ◆ Wait until the driver has been installed.



- ◆ Click on the "Finish" button to complete the installation.

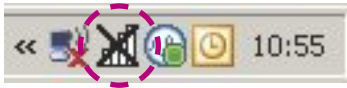


Configuration under Windows XP, Vista / 7

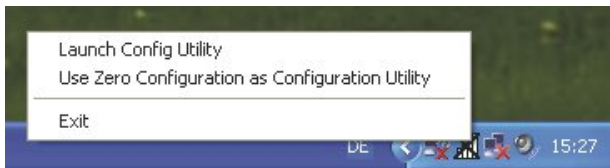
Starting the configuration programme

The "Hama Wireless LAN Utility" configuration programme can be executed in a number of ways:

- Start the programme via *Start -> All Programs -> Hama Wireless LAN -> Hama Wireless LAN Utility*
- Start the programme by double-clicking the circled symbol in the taskbar shown below.



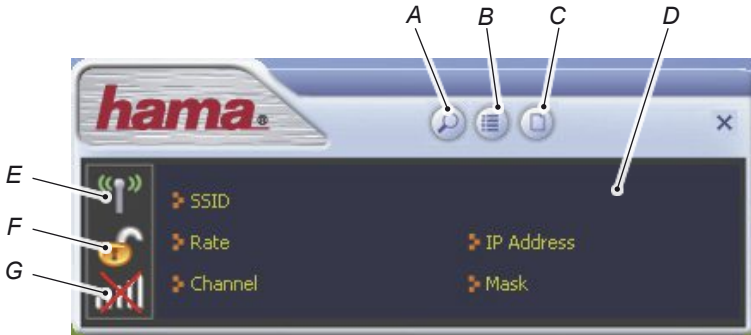
- Right-click the illustrated symbol in the task bar and select "Launch Config Utility" in the context menu.



Description of the configuration programme

The program parts of the "Hama Wireless LAN Utility" configuration program are described below.

The programme starts with the following view:

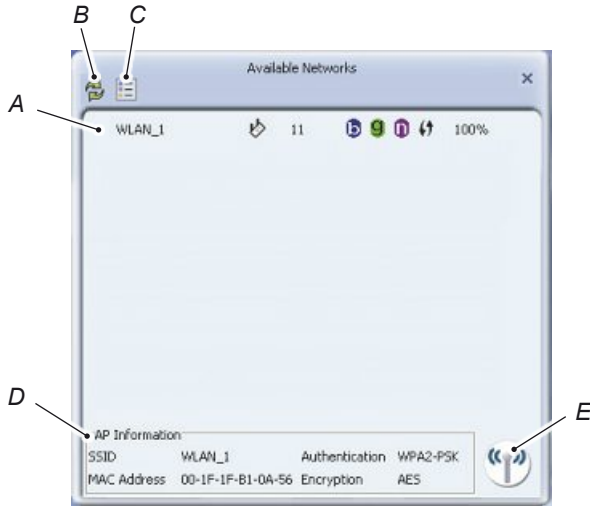


- A – *Display network overview*
- B – *Display link information*
- C – *Display profile list*
- D – *Display current connection information status*
- E – *Switch the transmitter/receiver ON/OFF*
- F – *Display encryption*
- G – *Display connection quality*

"Available Networks detail view"

All networks detected within range of the network adapter are displayed in the "Available Networks" detail view.

- ◆ Click the button "Available Networks" on the opening page of the configuration programme.



A	Displays a list of all available networks together with their properties. Double-clicking a network establishes connection to the corresponding wireless network. If the network is encrypted, a window is opened for entering the encryption information.
B	Refreshes the display of the available networks.
C	Opens the window for configuration of a new profile and copies the known values of the selected network directly to the profile.
D	Displays information on the access point.
E	Establishes connection with the selected wireless network. If the network is encrypted, a window is opened for entering the encryption information.

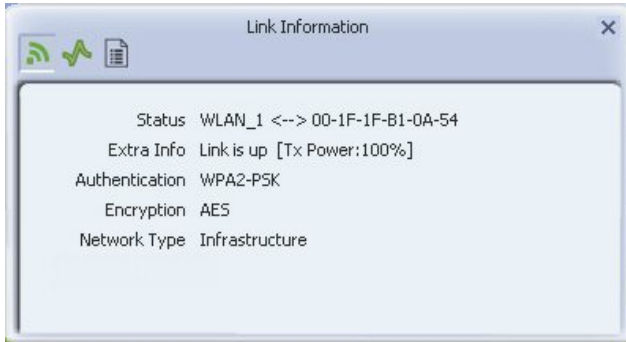
"Link information detail view"

The "Link Information" detail view displays the "Link Status", "Throughput" and "Statistics".

- ◆ Click the button "Link information" on the opening page of the configuration programme.

Link Status

The "Link Status" detail view displays the current status of the network adapter and the connection.

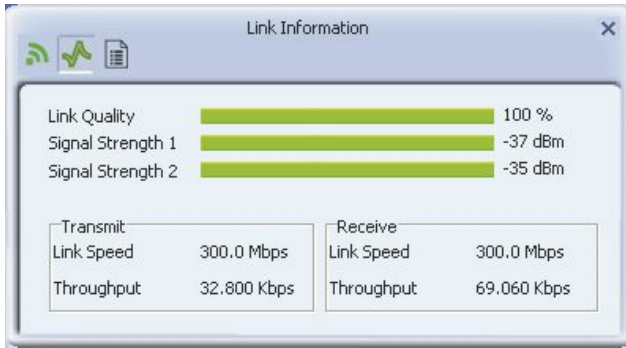


Status:	Displays the name and the MAC address of the network connection.
Extra Info:	Displays the transmitting power connection status of the network adapters.
Authentication:	Displays the network authentication.
Encryption:	Displays the currently selected encryption for the data transfer.
Network type:	Network connection type: Infrastructure for connection to a router/access point Ad hoc for direct connection to another WLAN-capable device.

Throughput

Transmission information is displayed in the "Throughput" detail view.

- ◆ Click the button "Throughput" in the upper left corner.



Link Quality:	Displays the connection quality.
Signal strength:	Displays the current signal strength of the connection.
Transmit:	Displays the current transmission speed and throughput.
Receive:	Displays the current reception speed and throughput.

Statistics

Details on the transmission and reception statistics are displayed in the "Statistics" detail view.


- ◆ Click the button "Statistics" in the upper left corner.









	Resets all counters to zero.
--	------------------------------

"Profile List" detail view

Connection profiles can be created and managed in the "Profile" detail view.

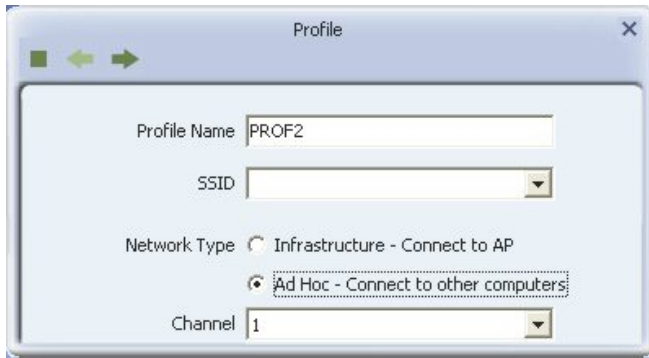
- ◆ Click the button  "Profile" on the opening page of the configuration programme.






Profile list:	Displays the list of profiles already created.
Profile information:	Display information on the selected profile.
	This button allows a new profile to be added.
	Deletes the selected profile.
	The settings of the selected profile can be edited.
	Imports an previously created profile.
	Exports the selected profile (e.g., for data backup).
	Quick connection to routers or access points that support quick establishment of connection via the WPS function.

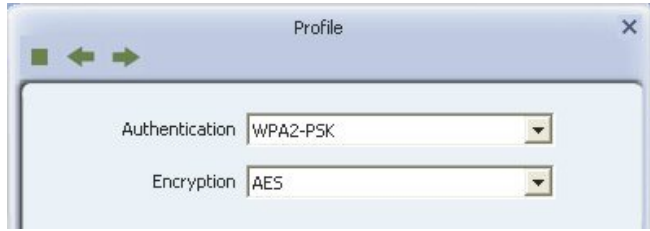
"Profile configuration"

When adding a new profile or editing an existing profile, a new window opens in which the settings for the profile can be made.



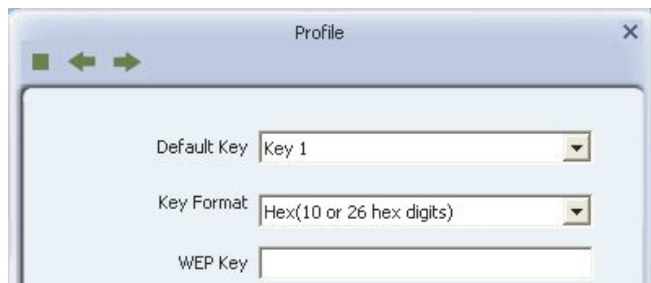
Profile name:	Name of the profile for easier identification. For example: "Office" or "Home".
SSID (Network name):	The unique network name as it is displayed in the list of available networks.
Network type:	Select type of network connection: Infrastructure for connection to a router/access point Ad hoc for direct connection to another WLAN-capable device.
Channel:	This selection is only available for an ad hoc network. A fixed channel number must be set for the connection.
	Cancel processing.
	Return to previous window.
	Continue to next window.

Network authentication



<p>Authentication:</p>	<p>The network authentication must match the settings for the network to be connection. The following is available: open, shared, WPA, WPA-PSK, WPA2, WPA2-PSK, 802.1x.</p>
<p>Encryption:</p>	<p>Data encryption must match the settings for the network to be connected. The following is available for connection: TKIP and AES.</p>

WEP encryption



Default Key	Select key 1-4 here.
Key format:	Select: Hex (10 or 26 Hex digits) if you use Hex characters (characters from 0-9 and a-f). ASCII (5 or 13 ASCII characters) if you use the ASCII character set (any character).
WEP key	Enter the WEP key here: WEP 64-bit ASCII requires 5 characters WEP 64-bit Hex requires 10 characters WEP 128-bit ASCII requires 13 characters WEP 128-bit Hex requires 26 characters

WPA/WPA2 encryption



WPA Pre-Shared Key:

Enter the network code for WPA-PSK authentication here that you received from your network administrator.

"Wi-Fi Protected Setup"

The detail view "Wi-Fi Protected Setup (WPS)" allows quick connection to routers or access points that support the rapid setup of connections using the WPS function.

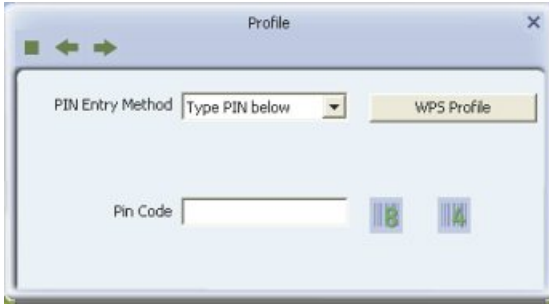
Two methods connection establishment are supported:


- PIN entry method (PIN code)
- Push-button configuration method (via WPS button)

PIN method (PIN)



- ◆ Select "PIN" for the PIN entry method.
- ◆ Select the desired router or access point for WPS AP List.
- ◆ Click the button "Next" button.



- ◆ For PIN input, select "Type PIN below".
- ◆ Enter the PIN code of the router or access point into the PIN-Code field.
- ◆ Click the button  "Next" button.



- ◆ Begin the PIN entry method by clicking the "Start PIN" button. The connection is automatically established as soon as a router or access point with the entered PIN code is found.


NOTE

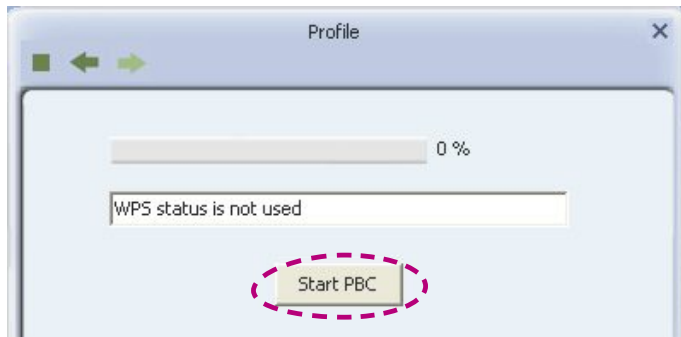
- ▶ Read the documentation on your WPS-compatible router or access point to find out where the PIN code is located.

Push-button configuration method (PBC)

In the case of the push-button configuration method, you must have access to the router or access point because the PBC button must be pressed after searching has started.



- ◆ Select "Push-Button (PBC)" for the push-button method.
- ◆ Click the button  "Next" button.



- ◆ Start the push-button method by clicking the "Start PBC" button.

- ◆ Press the PBC button on the router or access point.

The connection is automatically established after the corresponding router or access point is found.

NOTE

- ▶ The search for the router or access point can take up to a minute.
- ▶ Consult the documentation on your WPS-compatible router or access point to find out where the PBC button is located.


Establishing a WLAN connection for XP, Vista / 7

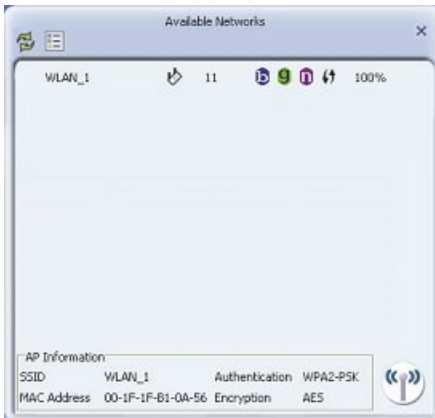
Connecting with the help of the "Hama Wireless LAN Utility"


To establish connection to a Wi-Fi network, proceed as follows:

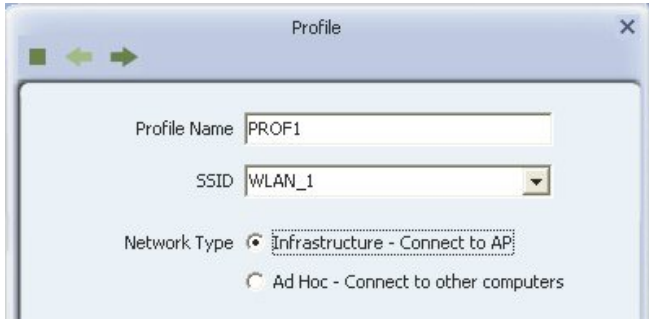
- ◆ Start the "Hama Wireless LAN Utility" configuration programme.




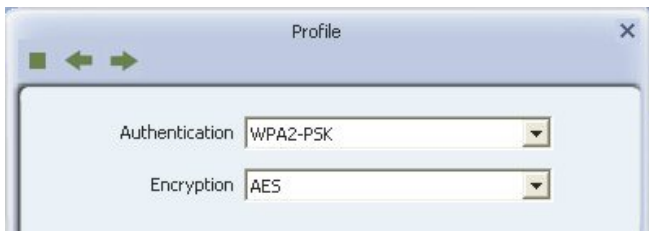
- ◆ Click the button  "Available Networks" on the upper edge of the window.




- ◆ Click the network that you want establish connection with.
- ◆ Click the button  "Add new profile".




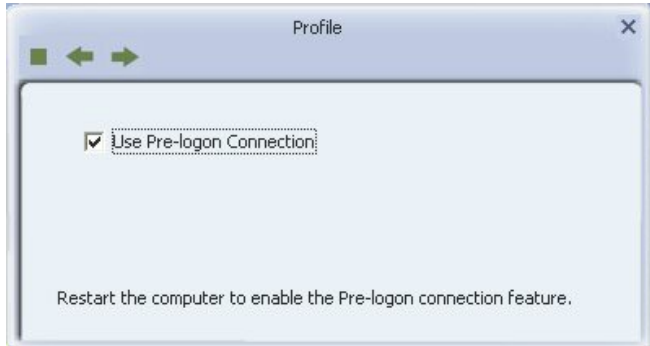
- ◆ Enter a profile name for easy identification (e. g., "Office" or "Home").
- ◆ Click the button  "Next" button.




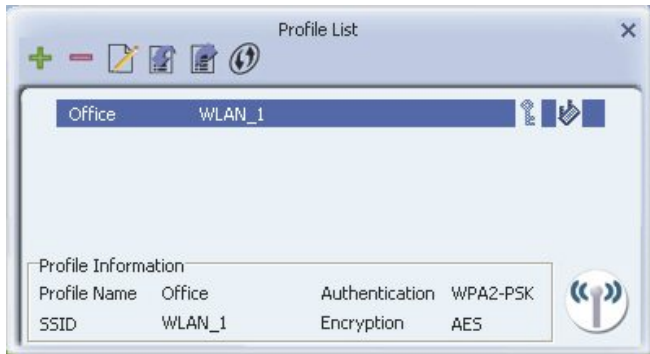
- ◆ Select the network authentication and the type of data encryption for the network. This data is available from the person who set up the wireless LAN.
- ◆ Click the button  "Next" button.




- ◆ Enter the network code for the network. This data is available from the person who set up the wireless LAN.
- ◆ Click the button  "Next" button.



- ◆ Activate the "Pre-logon" option if the network connection should take place prior to user logon.
- ◆ Click the button  "Next" button.



- ◆ Click the button  "Activate" to activate the profile. Connection to the wireless network of the activate profile is established automatically after the computer is rebooted.

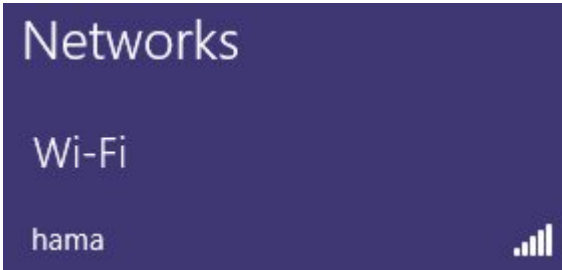
Establishing a WLAN connection for Windows 8

To establish connection with a wireless LAN, proceed as follows:

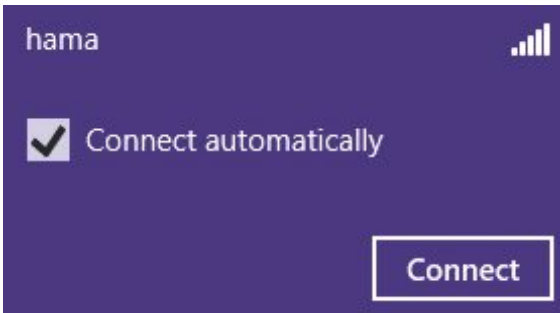
- ◆ Click on the following circled symbol in the task bar on the desktop.



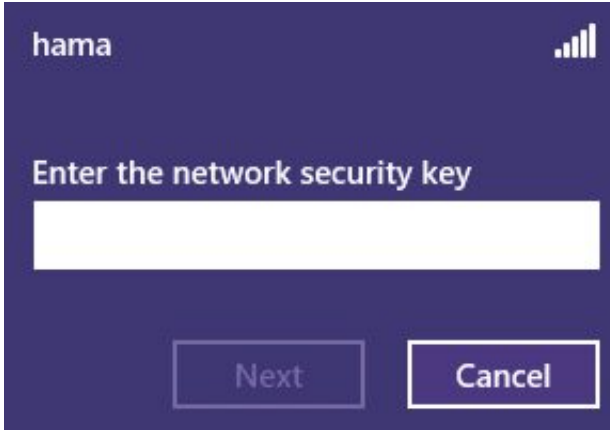
- ◆ Select the network that you want establish connection with.



- ◆ Mark the "Connect automatically" option.
- ◆ Click on the "Connect" button.



- ◆ Now enter the network key and subsequently click "Next".

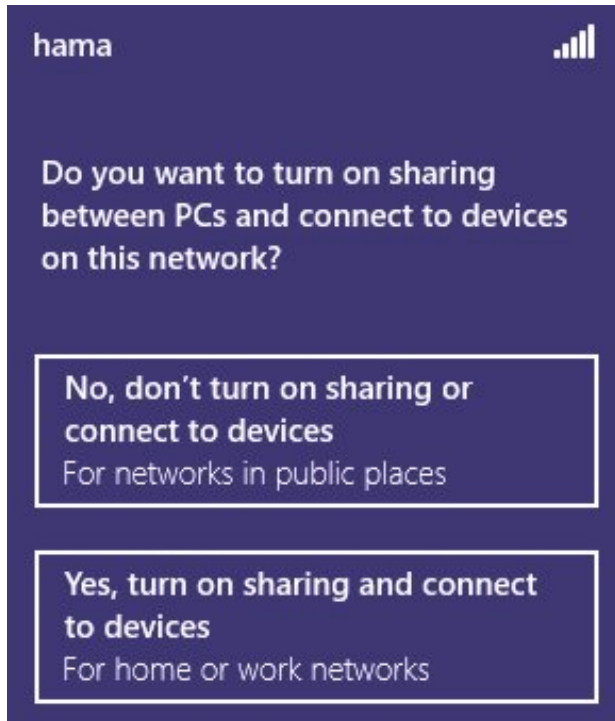


- ◆ Alternatively, if the following is displayed:



- ◆ press the WPS button on the router.
- ◆ In this case, the connection is established automatically.

- ◆ Subsequently select the desired network type.



Deinstalling under Windows XP, Vista / 7

To uninstall the driver and the configuration programme, proceed as follows:

- ◆ Click Start ->All Programs-> Hama Wireless LAN -> Uninstall to start deinstallation.
- ◆ Confirm the confirmation prompt with "Yes". The driver and the configuration programme are uninstalled.

Deinstalling under Windows 8

To deinstall, proceed as follows:

- ◆ Press the Windows button + X.
- ◆ Click on "Programs and Features".
- ◆ Mark "Windows Driver Package - Ralink (netr28ux or netr28u) Net".
- ◆ Click "Uninstall/Change".
- ◆ Confirm the confirmation prompt with "Yes".

The driver is uninstalled.

Troubleshooting

The following table will help you locate and eliminate minor faults:

Problem	Possible cause	Remedy
After installation and restart, no symbol appears in the Info section of the taskbar.	Error during installation.	Uninstall programme and drivers and install again.
The WLAN USB stick is not recognised when inserted.	WLAN USB stick not inserted correctly.	Insert the WLAN USB stick correctly.
	The USB port is not functioning.	Test the USB port with another USB device.
		Reinstall the manufacturer's chipset driver.
The WLAN USB stick is recognised when inserted, but has only limited connectivity (Windows XP).	Wrong service pack installed.	Download the latest service pack (Version 3 or higher) from www.microsoft.com and install.
The WLAN USB stick is recognised when inserted, but no matching driver is found.	Error during installation.	Uninstall programme and drivers and install again.
The desired peer is not shown in the list of available networks.	Peer not switched on.	Switch on peer.
	Peer out of range of the USB WLAN stick.	Reduce the distance or use a WLAN repeater.
The peer to which a connection is to be made is shown in the list of available networks, but no connection can be made.	The profile settings are not correct.	Check the following settings: <ul style="list-style-type: none"> – Network name (SSID) correct? – Correct network type? – Network authentication correct? – Data encryption correct? – Network code correct (pay attention to capitalisation)?

Problem	Possible cause	Remedy
The connection to the peer has been made, but folders or interfaced devices cannot be accessed.	The desired resource (folder, drive, printer or Internet connection) has not been shared.	Enable the desired resource for sharing in the network. Information can be found in the 'Help' of the operating system.
Limited connectivity.	The network code is not correct.	Check the network code.
	No IP address allocated.	Automatic assignment of IP addresses is deactivated (DHCP server).
		The DHCP server has not yet completed the automatic allocation of the IP address (this can take several minutes).
		Set the IP address manually.
No data can be exchanged via an "ad hoc" connection.	No IP address allocated.	See "Limited connectivity".
	Network code, work group or "ad hoc" network name do not match.	Check settings.
	Channel numbers do not match.	Set the correct channel numbers.
Occasional interference can occur during an "ad hoc" connection.	Possible frequency interference from microwave ovens, DECT telephones, Bluetooth devices or other transmitters.	Change to another channel.

NOTE

- ▶ If you cannot resolve the problem with the steps described above, please contact Hama product support.

Appendix

Technical data

USB port	USB Version 2.0 compatible with USB Version 1.1 (reduced data rate)
Supported standards	IEEE 802.11a (54 MBit/s) IEEE 802.11b (11 MBit/s) IEEE 802.11g (54 MBit/s) IEEE 802.11n (300 MBit/s)
Supported operating systems	Windows XP (SP3) Windows Vista (32-bit or 64-bit version) Windows 7 (32-bit or 64-bit version) Windows 8 (32-bit or 64-bit version)
Frequency band	2.4/5 GHz
Encryption	WPA/WPA2/WEP 64 and 128-bit
Displays	1 LED (connection/activity)
Antennas	2 integrated antennas
Dimensions (LxWxH)	78 x 27 x 10 mm
Weight	approx. 20 g
Power supply	via USB; no external power supply required
Ambient temperature range (operation)	0 - 40°C
Ambient temperature range (storage)	-25 - 65°C
Relative humidity	max. 95% (non-condensing)

Support and contact information

For defective products

In the event of product complaints, please contact your retailer or Hama product support.

Internet/World Wide Web

Product support, new drivers or production information can be found at www.hama.com.

Support hotline – Hama product support

Tel. +49 (0) 9091 / 502-115

Fax +49 (0) 9091 / 502-272

Email: produktberatung@hama.de

Notes on the EC Declaration of Conformity

Hama GmbH & Co. KG hereby declares that this device complies with the fundamental requirements and other relevant provisions of the 1999/5/EC directive. The Declaration of Conformity according to the R&TTE Directive 99/5/EC can be found at www.hama.com

Operating restrictions

If channel 36-64 (channels with frequencies 5150MHz - 5350MHz) or the 2.4GHz range in France are used, the device may only be used in closed rooms.



(D) Hinweis zum Umweltschutz:



Ab dem Zeitpunkt der Umsetzung der europäischen Richtlinie 2002/96/EG und 2006/66/EG in nationales Recht gilt folgendes: Elektrische und elektronische Altgeräte sowie Batterien dürfen nicht mit dem Hausmüll entsorgt werden. Der Verbraucher ist gesetzlich verpflichtet, elektrische und elektronische Geräte sowie Batterien am Ende ihrer Lebensdauer an den dafür eingerichteten, öffentlichen Sammelstellen oder an die Verkaufsstelle zurückzugeben. Einzelheiten dazu regelt das jeweilige Landesrecht. Das Symbol auf dem Produkt der Gebrauchsanleitung oder der Verpackung weist auf diese Bestimmungen hin. Mit der Wiederverwertung, der Stofflichen Verwertung oder anderer Formen der Verwertung von Altgeräten/Batterien leisten Sie einen wichtigen Beitrag zum Schutz unserer Umwelt.

(GB) Note on environmental protection:



After the implementation of the European Directive 2002/96/EU and 2006/66/EU in the national legal system, the following applies: Electric and electronic devices as well as batteries must not be disposed of with household waste. Consumers are obliged by law to return electrical and electronic devices as well as batteries at the end of their service lives to the public collecting points set up for this purpose or point of sale. Details to this are defined by the national law of the respective country. This symbol on the product, the instruction manual or the package indicates that a product is subject to these regulations. By recycling, reusing the materials or other forms of utilising old devices/Batteries, you are making an important contribution to protecting our environment.

(F) Remarques concernant la protection de l'environnement:



Conformément à la directive européenne 2002/96/CE et 2006/66/CE, et afin d'atteindre un certain nombre d'objectifs en matière de protection de l'environnement, les règles suivantes doivent être appliquées : Les appareils électriques et électroniques ainsi que les batteries ne doivent pas être éliminés avec les déchets ménagers. Le pictogramme « picto » présent sur le produit, son manuel d'utilisation ou son emballage indique que le produit est soumis à cette réglementation. Le consommateur doit retourner le produit/la batterie usager aux points de collecte prévus à cet effet. Il peut aussi le remettre à un revendeur. En permettant enfin le recyclage des produits ainsi que les batteries, le consommateur contribuera à la protection de notre environnement. C'est un acte écologique.

(E) Nota sobre la protección medioambiental:



Después de la puesta en marcha de la directiva Europea 2002/96/EU y 2006/66/EU en el sistema legislativo nacional, se aplicara lo siguiente: Los aparatos eléctricos y electrónicos, así como las baterías, no se deben evacuar en la basura doméstica. El usuario está legalmente obligado a llevar los aparatos eléctricos y electrónicos, así como pilas y pilas recargables, al final de su vida útil a los puntos de recogida comunales o a devolverlos al lugar donde los adquirió. Los detalles quedaran definidos por la ley de cada país. El símbolo en el producto, en las instrucciones de uso o en el embalaje hace referencia a ello. Gracias al reciclaje, al reciclaje del material o a otras formas de reciclaje de aparatos/pilas usados, contribuye Usted de forma importante a la protección de nuestro medio ambiente.

(NL) Notitie aangaande de bescherming van het milieu:



Ten gevolge van de invoering van de Europese Richtlijn 2002/96/EU en 2006/66/EU in het nationaal juridisch system, is het volgende van toepassing: Elektrische en elektronische apparatuur, zoals batterijen mag niet met het huisvuil weggegooid worden. Consumenten zijn wettelijk verplicht om elektrische en elektronische apparaten zoals batterijen op het einde van gebruik in te dienen bij openbare verzamelplaatsen speciaal opgezet voor dit doeleinde of bij een verkooppunt. Verdere specificaties aangaande dit onderwerp zijn omschreven door de nationale wet van het betreffende land. Dit symbol op het product, de gebruiksaanwijzing of de verpakking duidt erop dat het product onderworpen is aan deze richtlijnen. Door te recycleren, hergebruiken van materialen of andere vormen van hergebruiken van oude toestellen/batterijen, levert u een grote bijdrage aan de bescherming van het milieu.

(I) Informazioni per protezione ambientale:



Dopo l'implementazione della Direttiva Europea 2002/96/EU e 2006/66/EU nel sistema legale nazionale, ci sono le seguenti applicazioni: Le apparecchiature elettriche ed elettroniche e le batterie non devono essere smaltite con i rifiuti domestici. I consumatori sono obbligati dalla legge a restituire i dispositivi elettrici ed elettronici e le batterie alla fine della loro vita utile ai punti di raccolta pubblici preposti per questo scopo o nei punti vendita. Dettagli di questo riportato sono definiti dalle leggi nazionali di ogni stato. Questo simbolo sul prodotto, sul manuale d'istruzioni o sull'imballo indicano che questo prodotto è soggetto a queste regole. Riciclando, ri-utilizzando i materiali o utilizzando sotto altra forma i vecchi prodotti/le batterie, darete un importante contributo alla protezione dell'ambiente.

(GR) Υπόδειξη σχετικά με την προστασία περιβάλλοντος:



Από τη στιγμή που η Ευρωπαϊκή Οδηγία 2002/96/EE και 2006/66/EE ενσωματώνεται στο εθνικό δίκαιο ισχύουν τα εξής: Οι ηλεκτρικές και οι ηλεκτρονικές συσκευές καθώς και οι μπαταρίες δεν επιτρέπεται να πετιούνται στα οικιακά απορρίμματα. Οι καταναλωτές υποχρεούνται από τον νόμο να επιστρέφουν τις ηλεκτρικές και ηλεκτρονικές συσκευές καθώς και τις μπαταρίες στο τέλος της ζωής τους στα δημόσια σημεία περιουλογγής που έχουν δημιουργηθεί γι' αυτό το σκοπό ή στα σημεία πώλησης. Οι λεπτομέρειες ρυθμίζονται στη σχετική νομοθεσία. Το σύμβολο πάνω στο προϊόν, στο εγχειρίδιο χρήσης ή στη συσκευασία παραπέμπει σε αυτές τις διατάξεις. Με την ανακύκλωση, επαναχρησιμοποίηση των υλικών ή με άλλες μορφές χρησιμοποίησης παλιών συσκευών / Μπαταριών συνεισφέρετε σημαντικά στην προστασία του περιβάλλοντος. Στη Γερμανία ισχύουν αντίστοιχα οι παραπάνω κανόνες απόρριψης σύμφωνα με τον κανονισμό για μπαταρίες και συσσωρευτές.

(S) Not om miljöskydd:



Efter implementeringen av EU direktiv 2002/96/EU och 2006/66/EU i den nationella lagstiftningen, gäller följande: Elektriska och elektroniska apparater samt batterier får inte kastas i hushållssoptorna. Konsumenter är skyldiga att återlämna elektriska och elektroniska apparater samt batterier vid slutet av dess livslängd till, för detta ändamål, offentliga uppsamlingsplatser. Detaljer för detta definieras via den nationella lagstiftningen i respektive land. Denna symbol på produkten, instruktionsmanualen eller på förpackningen indikerar att produkten innefattas av denna bestämmelse. Genom återvinning och återanvändning av material/batterier bidrar du till att skydda miljön och din omgivning.

(FIN) Ympäristönsuojelua koskeva ohje:



Siitä lähtien, kun Euroopan unionin direktiivi 2002/96/EU ja 2006/66/EU otetaan käyttöön kansallisessa lainsäädännössä, pätevät seuraavat määräykset: Sähkö- ja elektronikkalaitteita ja paristoja ei saa hävittää talousjätteen mukana. Kuluttajalla on lain mukaan velvollisuus toimittaa sähkö- ja elektronikkalaitteet niiden käyttöön päätyttyä niille varattuihin julkisiin keräyspisteisiin tai palauttaa ne myyntipaikkaan. Tähän liittyistä yksityiskohdista säädetään kulloisenkin osavaltion laissa. Näistä määräyksistä mainitaan myös tuotteen symbolissa, käyttöohjeessa tai pakkauskassa. Uudelleen-käytöllä, materiaalien/paristoja uudelleenkäytöllä tai muilla vanhojen laitteiden uudelleenkäyttötavoilla on tärkeä vaikutus yhteisen ympäristöme suojelelusa.



PL Wskazówki dotyczące ochrony środowiska:

Od czasu wprowadzenia europejskiej dyrektywy 2002/96/EU i 2006/66/EU do prawa narodowego obowiązują następujące ustalenia: Urządzeń elektrycznych, elektronicznych oraz baterii jednorazowych nie należy wyrzucać razem z codziennymi odpadami domowymi! Użytkownik zobowiązany prawnie do oddnienia zepsutych, zniszczonych lub niepotrzebnych urządzeń elektrycznych i elektronicznych do punktu zbiórki lub do sprzedawcy. Szczegółowe kwestie regulują przepisy prawne danego kraju. Informuje o tym symbol przekreślonego kosza umieszczony na opakowaniu. Segregując odpady pomagasz chronić środowisko!



H Környezetvédelmi tudnivalók:

Az európai irányelvek 2002/96/EU és 2006/66/EU alapján a megjelölt időponttól kezdve, minden EU-s tagállamban érvényesek a következők: Az elektromos és elektronikai készülékeket és az elemeket nem szabad a háztartási szemétkébe dobni! A leselejtezett elektromos és elektronikus készülékeket és elemeket, akkumulátorokat nem szabad a háztartási szemétkébe dobni. Az elhasznált és működésképtelen elektromos és elektronikus készülékek gyűjtésére törvényi előírás kötelez mindenkit, ezért azokat el kell szállítani egy kijelölt gyűjtő helyre vagy visszavinni a vásárlás helyére. A termék csomagolásán feltüntetett szimbólum egyértelmű jelzést ad erre vonatkozóan a felhasználónak. A régi készülékek begyűjtése, visszaváltása vagy bármilyen formában történő újra hasznosítása közös hozzájárulás környezetünk védelméhez.



CZ Ochrana životního prostředí:

Evropská směrnice 2002/96/EG a 2006/66/EE ustanovuje následující: Elektrická a elektronická zařízení stejně jako baterie nepatří do domovního odpadu. Spotřebitel se zavazuje odevzdat všechna zařízení a baterie po uplynutí jejich životnosti do příslušných sběrů. Podrobnosti stanoví zákon příslušné země. Symbol na produktu, návod k obsluze nebo balení na toto poukazuje. Recyklací a jinými způsoby užitkování přispíváte k ochraně životního prostředí.



SK Ochrana životného prostredia:

Európska smernica 2002/96/EU a 2006/66/EE stanovuje: Elektrické a elektronické zariadenia, rovnako ako batérie sa nesmú vyhazovať do domáceho odpadu. Spotrebiteľ je zo zákona povinný zlikvidovať elektrické a elektronické zariadenia, rovnako ako batérie na miesta k tomu určené. Symbolizuje to obrázok vo návode na použitie, alebo na balení výrobku. Opätovným užitkováním alebo inou formou recyklácie starých zariadení/baterií prispievate k ochrane životného prostredia.



P Nota em Protecção Ambiental:

Após a implementação da diretiva comunitária 2002/96/EU e 2006/66/EU no sistema legal nacional, o seguinte aplica-se: Os aparelhos eléctricos e electrónicos, bem como baterias, não podem ser eliminados juntamente com o lixo doméstico. Consumidores estão obrigados por lei a colocar os aparelhos eléctricos e electrónicos, bem como baterias, sem uso em locais públicos específicos para este efeito ou no ponto de venda. Os detalhes para este processo são definidos por lei pelos respectivos países. Este símbolo no produto, o manual de instruções ou a embalagem indicam que o produto está sujeito a estes regulamentos. Reciclando, reutilizando os materiais dos seus velhos aparelhos/baterias, esta a fazer uma enorme contribuição para a protecção do ambiente.



RUS Охрана окружающей среды:

С момента перехода национального законодательства на европейские нормативы 2002/96/EU и 2006/66/EE действительно следующее: Электронические и электронные приборы, а также батареи запрещается утилизировать с обычным мусором. Потребитель, согласно закону, обязан утилизировать электрические и электронные приборы, а также батареи и аккумуляторы после их использования в специально предназначенных для этого пунктах сбора, либо в пунктах продажи. Детальная регламентация этих требований осуществляется соответствующим местным законодательством. Необходимость соблюдения данных предписаний обозначается особым знаком на изделии, инструкции по эксплуатации или упаковке. При переработке, повторном использовании материалов или при другой форме утилизации бывших в употреблении приборов Вы помогаете охране окружающей среды. В соответствии с предписаниями по обращению с батареями, в Германии вышеназванные нормативы действуют для утилизации батарей и аккумуляторов.



TR Çevre koruma uyarısı:

Avrupa Birliği Direktifi 2002/96/EU ve 2006/66/EE ulusal yasal uygulamalar için de geçerli olduğu tarihten itibaren: Elektrikli ve elektronik cihazlarla piller normal evsel çöpe atılmamalıdır. Tüketiciler için, artık çalışmayan elektrikli ve elektronik cihazlarla piller, kamuya ait toplama yerlerine götürme veya satın alındıkları yerlere geri verme yasal bir zorunluluktur. Bu konu ile ilgili ayrıntırlar ulusal yasalarla düzenlenmektedir. Ürün üzerinde, kullanıma kilavuzunda veya ambalajda bulunan bu sembol tüketicileri bu konuda uyarır. Eski cihazların geri kazanımı, yapıldıkları malzemelerin değerlendirilmesi veya diğer değerlendirme şekilleri ile, çevre korumasına önemli bir katkıda bulunursunuz. Yukarıda adı geçen atık toplama kuralları Almanya'da piller ve aküler için de geçerlidir.



RO Instrucțiuni pentru protecția mediului înconjurător:

În momentul aplicării directivelor europene 2002/96/UE în dreptul național sunt valabile următoarele: Aparatele electrice și electronice nu pot fi salubritate cu gunoii menajeri. Consumatorul este obligat conform legii să predea aparatele electrice și electronice la sfârșitul duratei de utilizare la locurile de colectare publice sau înpui de unde au fost cumpărate. Detaliile sunt reglementate de către legislația țării respective. Simbolul de pe produs, în instrucțiunile de utilizare sau pe ambalaj indică aceste reglementări. Prin reciclarea, revalorificarea materialelor sau alte forme de valorificare a aparatelor scoase din uz aduceți o contribuție importantă la protecția mediului nostru înconjurător.



DK Anvisninger til beskyttelse af miljøet:

Fra og med indførelsen af EU-direktiverne 2002/96/EF og 2006/66/EF i national ret gælder følgende: Elektrisk og elektronisk udstyr samt batterier må ikke bortskaffes sammen med almindeligt husholdningsaffald. Forbrugeren er lovmæssigt forpligtet til at aflevere udtjent elektrisk og elektronisk udstyr samt batterier til dertil indrettede, offentlige indsamlingssteder eller til forhandlere. De nærmere bestemmelser vedr. dette fastlægges af lovgivningen i det pågældende land. Symbolet på produktet, brugsvejledningen eller emballagen henviser til disse bestemmelser. Ved genbrug, genvinning eller andre former for nyttiggørelse af udtjent udstyr/batterier giver du et vigtigt bidrag til beskyttelse af miljøet.



N Informasjon om beskyttelse av miljøet:

Fra tidspunktet for omsetning av de europeiske direktivene 2002/96/EF og 2006/66/EF i nasjonal rett gjelder følgende: Elektriske og elektroniske apparater og batterier må ikke deponeres sammen med husholdningsgjøpøplet. Forbrukeren er lovmessig forpliktet til å levere elektriske og elektroniske apparater og batterier til de offentlige samlestedene eller tilbake til stedet hvor produktene ble kjøpt. Detaljer angående dette reguleres av hvert land. Symbolet på produktet, bruksanvisningen eller emballasjen henviser om disse bestemmelsene. Med resirkulering, genbruk av stoffer eller andre former av genbruk av gamle apparater/batterier bidrar du betydelig til å beskytte miljøet vårt.

<p>(D)</p>	<p>Wenn Kanal 36-64 (Kanäle der Frequenz 5150MHz - 5350MHz) oder das 2,4GHz Band in Frankreich verwendet wird, darf das Gerät nur in geschlossenen Räumen verwendet werden.</p> <p>Hiermit erklärt Hama GmbH & Co. KG, dass sich dieses Gerät in Übereinstimmung mit den grundlegenden Anforderungen und den übrigen einschlägigen Bestimmungen der Richtlinie 1999/5/EG befindet. Die Konformitätserklärung nach der R&TTE Richtlinie 99/5/EG finden Sie unter www.hama.com</p>	<p>(H)</p> <p>A 36-64 csatornák (az 5150MHz - 5350MHz frekvenciájú csatornák), vagy a 2,4GHz sáv franciaországi használata esetén a készüléket csak zárt térben szabad használni.</p> <p>A Hama GmbH & Co. KG ezúton kijelenti, hogy a jelen készülék összhangban van az 1999/5/EK irányelv alapvető követelményeivel és az egyéb vonatkozó rendelkezésekkel. A 99/5/EK R&TTE irányelv szerinti megfelelőségi nyilatkozatot a www.hama.com címen találja meg.</p>
<p>(GB)</p>	<p>When using channels 36-64 (frequency 5150 MHz – 5350 MHz) or the 2.4 GHz band in France, the device may only be operated in enclosed spaces.</p> <p>Hama GmbH & Co. KG hereby declares that this device is in compliance with the basic requirements and other relevant regulations of the 1999/5/EC guideline. You will find the declaration of conformity with R&TTE directive 99/5/EC on the internet at www.hama.com</p>	<p>(CZ)</p> <p>Pokud se kanál 36-64 (kanály frekvence 5150MHz - 5350MHz) nebo pásmo 2,4GHz používá ve Francii, smí se přístroj používat pouze v uzavřených prostorách.</p> <p>Tímto firma Hama GmbH & Co. KG potvrzuje, že tento přístroj odpovídá základním požadavkům a ostatním relevantním předpisům směrnice 1999/5/ES. Prohlášení o shodě podle směrnice R&TTE 99/5/ES najdete na internetových stránkách www.hama.com</p>
<p>(F)</p>	<p>L'appareil doit être utilisé à l'intérieur de bâtiments en cas d'utilisation, en France, des canaux 36-64 (bande de fréquences 5150 MHz - 5350 MHz) ou de la bande de fréquence 2,4 GHz.</p> <p>La société Hama GmbH & Co. KG certifie que cet appareil est conforme aux exigences de base et aux dispositions de la directive 1999/5/EC en vigueur. Vous trouverez la déclaration de conformité à la directive R&TTE 99/5/CE sur www.hama.com</p>	<p>(SK)</p> <p>Ak sa používa kanál 36-64 (kanály frekvencie 5150MHz - 5350MHz) alebo pásmo 2,4GHz vo Francúzsku, smie sa prístroj používať iba v uzavretých priestoroch.</p> <p>Spoločnosť Hama GmbH & Co. KG týmto prehlasuje, že tento prístroj zodpovedá základným požiadavkám a ostatným relevantným ustanoveniam Smernice 1999/5/ES. Vyhlásenie o zhode podľa smernice R&TTE 99/5/ES si môžete pozrieť na adrese www.hama.com</p>
<p>(E)</p>	<p>Si se utiliza el canal 36-64 (canales de la frecuencia 5150MHz - 5350MHz) o la banda de 2,4 GHz en Francia, el aparato sólo se puede utilizar en recintos cerrados.</p> <p>Mediante la presente, Hama GmbH & Co. KG declara que este aparato cumple con los requisitos básicos y los demás reglamentos relevantes de la directiva 1999/5/CE. La declaración de conformidad según la directiva R&TTE 99/5/CE la encontrará en www.hama.com</p>	<p>(P)</p> <p>Se forem utilizados os canais 36-64 (canais na gama de frequências 5150 MHz – 5350 MHz) ou a banda de 2,4 GHz na França, a utilização do aparelho é permitida apenas em recintos fechados.</p> <p>A Hama GmbH & Co. KG declara, deste modo, que este aparelho respeita as exigências básicas e restantes requisitos relevantes da directiva 1999/5/CE. Pode consultar a declaração de conformidade, segundo a directiva R&TTE 99/5/CE, em www.hama.com</p>
<p>(NL)</p>	<p>Indien kanaal 36-64 (kanalen in de frequentieband 5150MHz - 5350MHz) of de 2,4GHz-band in Frankrijk wordt gebruikt, dan mag het toestel uitsluitend binnen gesloten ruimten worden gebruikt.</p> <p>Hiermee verklaart Hama GmbH & Co. KG, dat dit apparaat voldoet aan de vereisten en de overige relevante voorschriften van de richtlijn 1999/5/EG. De verklaring van overeenstemming conform de R&TTE-richtlijn 99/5/EG vindt u op internet onder www.hama.com</p>	<p>(RUS)</p> <p>Во Франции каналы 36-64 (диапазон 5150 - 5350 МГц) и канал 2,4 ГГц разрешается применять только внутри помещений.</p> <p>Компания Hama GmbH & Co. KG настоящим подтверждает, что данное изделие полностью соответствует основным требованиям, а также предписаниям и положениям нормативов 1999/5/EG. Заявление о соответствии товара нормам R&TTE 99/5/EG см. на вебсайте www.hama.com</p>

<p>(I)</p>	<p>Se il canale 36-64 (canali della frequenza 5150MHz - 5350MHz) o la banda 2,4GHz vengono utilizzati in Francia, l'apparecchio su può utilizzare esclusivamente in locali chiusi. Hama GmbH & Co. KG dichiara che questo apparecchio soddisfa i requisiti fondamentali ed è conforme alle norme vigenti della direttiva 1999/5/CE. La dichiarazione di conformità secondo la direttiva R&TTE 99/5/CE è disponibile sul sito www.hama.com</p>	<p>(TR)</p>	<p>Kanal 36-64 (5150MHz - 5350MHz frekansları arasındaki kanallar) veya 2,4GHz Bant (Fransa) kullanıldığında cihaz sadece kapalı mekanlarda kullanılmalıdır. Hama GmbH & Co. KG bu cihazın 1999/5/EC Direktifi'nin ilgili talimatlarına ve bu direktif tarafından istenen koşullara uygunluğunu beyan eder. R&TTE Direktifi 99/5/EC'ye göre uygunluk beyanı için www.hama.com adresine bakınız.</p>
<p>(GR)</p>	<p>Όταν χρησιμοποιείται το κανάλι 36-64 (κανάλι της συχνότητας 5150MHz - 5350MHz) ή η ζώνη 2,4GHz στη Γαλλία, η συσκευή επιτρέπεται να χρησιμοποιείται μόνο σε κλειστούς χώρους. Η εταιρία Hama GmbH & Co. KG δηλώνει πως η συσκευή αυτή εκπληρώνει τις βασικές απαιτήσεις και τις λοιπές σχετικές διατάξεις της οδηγίας 1999/5/ΕΚ. Τη δήλωση συμμόρφωσης σύμφωνα με την οδηγία R&TTE 99/5/ΕΚ θα τη βρείτε στη διεύθυνση www.hama.com</p>	<p>(RO)</p>	<p>Dacă canalul 36-64 (canal cu frecvența 5150MHz - 5350MHz) sau banda de 2,4 GHz se folosește în Franța, aparatul are voie să se folosească numai în încăperi închise. Hama GmbH & Co. KG, declară prin prezenta ca acest aparat este în conformitate cu cerințele esențiale și celelalte hotărâri relevante ale Directivei 1999/5/EC. Declarația de conformitate conform Directivei R&TTE 99/5/EC o găsiți în Internet la www.hama.com</p>
<p>(S)</p>	<p>När kanal 36-64 (kanaler för frekvensen 5150MHz - 5350MHz) eller 2,4GHz bandet används i Frankrike får apparaten bara användas inomhus. Hama GmbH & Co. KG försäkrar härmed att den här apparaten överensstämmer med de grundläggande kraven och övriga relevanta bestämmelser i direktivet 1999/5/EG. Försäkran om överensstämmelse enligt R&TTE-direktivet 99/5/EG hittar du på www.hama.com</p>	<p>(DK)</p>	<p>Hvis kanal 36-64 (kanaler på frekvensen 5150 MHz - 5350 MHz) eller 2,4 GHz-båndet anvendes i Frankrig, må apparatet kun anvendes i lukkede rum. Hama GmbH & Co. KG erklærer hermed, at dette apparat er i overensstemmelse med de grundlæggende krav og de øvrige, relevante bestemmelser i direktiv 1999/5/EF. Overensstemmelseserklæringen i henhold til direktivet om radio og teleterminaludstyr 99/5/EF kan du finde på www.hama.com</p>
<p>(FIN)</p>	<p>Käytettäessä kanavia 36-64 (kanavia taajuusalueella 5150 MHz - 5350 MHz) tai Ranskan 2,4 GHz:n taajuuskaistaa laitetta saa käyttää vain suljetuissa tiloissa. Hama GmbH & Co. KG vakuuttaa täten, että tämä laite on direktiivin 1999/5/EY perusvaatimusten ja muiden oleellisten säännösten mukainen. Radio- ja telepäätelaitteita koskevan direktiivin 99/5/EY mukainen vaatimustenmukaisuusvakuutus löytyy osoitteesta www.hama.com</p>	<p>(N)</p>	<p>Hvis kanal 36-64 (kanaler på frekvens 5150 MHz - 5350 MHz) eller 2,4 GHz-båndet brukes i Frankrike, skal enheten kun benyttes i lukkede rom. Med dette erklærer Hama GmbH & Co. KG at dette apparatet er i overensstemmelse med grunnleggende krav og relevante bestemmelser i direktiv 1999/5/EF. Du finner samsvarserklæringen i henhold til R&TTE-direktiv 99/5/EF under www.hama.com</p>
<p>(PL)</p>	<p>Jeżeli kanał 36-64 (kanały częstotliwości 5150 MHz – 5350 MHz) lub pasmo 2,4 GHz używane będą we Francji, urządzenie wolno stosować tylko w zamkniętych pomieszczeniach. Hama GmbH & Co. KG oświadcza niniejszym, że urządzenie to spełnia podstawowe wymagania i pozostałe właściwe postanowienia dyrektywy 1999/5/WE. Deklaracja zgodności wg dyrektywy 99/5/WE dotyczącej urządzeń radiowych i telekomunikacyjnych dostępna jest na stronie www.hama.com</p>		

hama[®]
Hama GmbH & Co KG
D-86652 Monheim
www.hama.com

All listed brands are trademarks of the corresponding companies.

Errors and omissions excepted, and subject to technical changes. Our general terms of delivery and payment are applied.



00053132/11.12