

**hama**®

W I R E L E S S L A N

# WLAN Beamer Adapter »Video«



**00053192**

## Table of Contents

1. Overview.....	09
2. Panel Descriptions.....	09
3. Hardware Setup.....	10
4. Software Setup.....	11
5. Software Application.....	11
6. Troubleshooting Tips.....	13
7. Contact- and Supportinformation.....	13

Wireless Beamer Adapter = WBA

## 1. Overview

### Features:

The Hama Wireless Beamer Adapter is a video/graphics converter that enables you to turn any display (such as a TV, monitor or projector) into an alternate screen for your desktop or laptop computer. It has its own software that allows you to control viewing options, and configure settings so that future viewing sessions are easy.

### Package Contents

The WBA package contains the following items:



Adapter



Power Adapter



Ethernet Cable



Audio Cable



Video Cable



Application CD



Setup Guide

### System requirements

- Windows XP SP2 (Home or Professional), Windows 2000 SP4 or Windows Vista
- 1.5 GHz Pentium processor or better
- 512 MB RAM for Windows XP; 1024 MB RAM for Windows Vista
- PC or Notebook with wireless Lan connectivity
- 10MB free hard drive space
- Projector, TV or monitor with VGA connectivity
- CD-ROM drive for software installation

### Safety instructions:

Do not use the device in moist or extremely dusty areas, on radiators or in the vicinity of heat sources. This device is not designed for use outdoors. Protect the device from pressure and impact. The device may not be opened or moved during operation. **Caution!** Use the WBA with the enclosed power supply unit only. Using other power supply units can cause irreparable damage to the product.

## 2. Panel Descriptions

### Back Panel:

The back panel of wireless WBA adapter:



ANTENNA	Wireless 802.11B/G
POWER	+5V DC
LINE OUT	Stereo out to TV Audio in or other Speakers
VGA	VGA video out to TV or Projector
WAN	Ethernet to Internet connection
RESET	Restore to factory default setting

### Front Panel:

The wireless WBA LED indicator display information about the device's status.



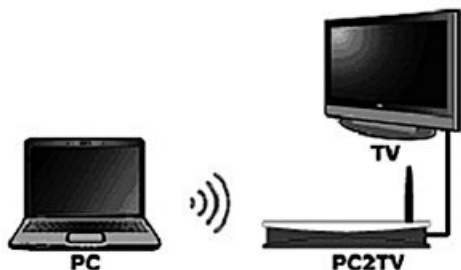
POWER	Red Light when device is powered on.
WLAN	Green Light when wireless connection is established.

### 3. Hardware Setup

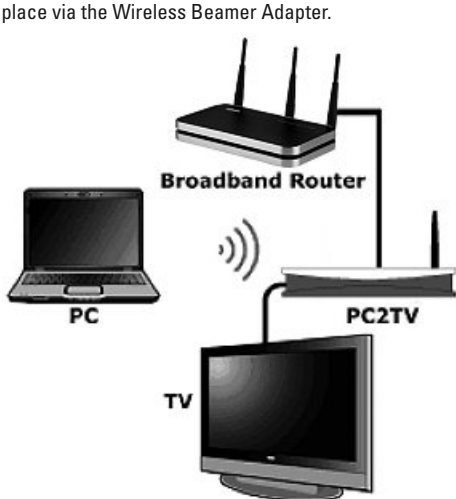
#### Configuration Overview

The Wireless Beamer Adapter always directly connects to the TV via VGA cables and the audio cable. Different connection scenarios are possible for communication among the PC and the Wireless Beamer Adapter. Also the Wireless Beamer Adapter is able to handle the internet transfers.

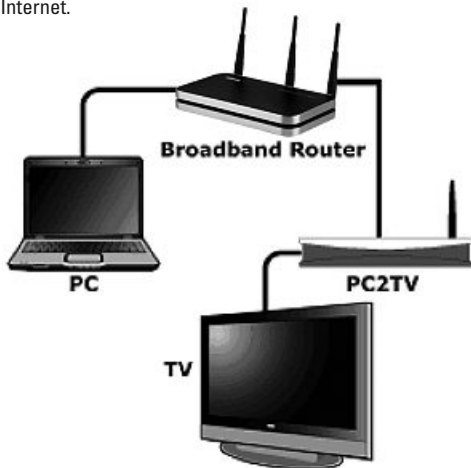
**Configuration A:** The Wireless Beamer Adapter communicates with the PC wirelessly. Without connection to the internet.



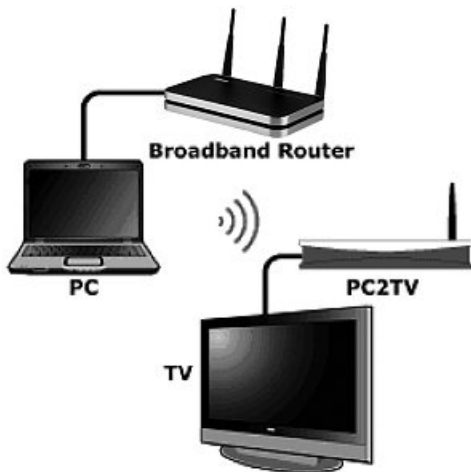
**Configuration B:** The Wireless Beamer Adapter communicates wirelessly with the PC and a wired Ethernet connection with the Broadband Router. During the session, all transfers to and from the Internet take place via the Wireless Beamer Adapter.



**Configuration C:** Both the PC and the Wireless Beamer Adapter are connected to the Broadband Router via wired Ethernet. The Broadband Router is responsible for all data transfers between the PC and the Wireless Beamer Adapter as well as between the PC and the Internet.

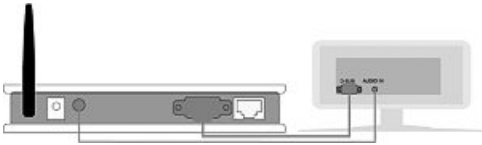


**Configuration D:** The PC wirelessly communicates with the Wireless Beamer Adapter and with the Broadband Router via wired Ethernet. All transfers to and from the Internet take place via the Broadband Router.



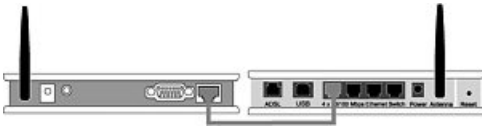
### Attaching WBA Audio and Video to TV

1. Connect a VGA cable to the appropriate VGA port on the Wireless Beamer Adapter.
2. Connect the other end of the cable to the appropriate VGA port (D-SUB) on the television, projector or monitor.
3. Connect the audio cable to the Line Out port, and to the TV's Audio in port or other speakers.



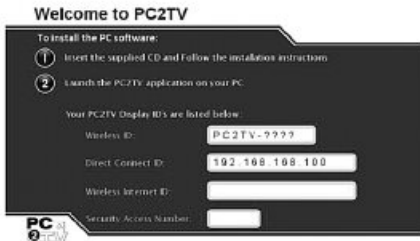
### Attaching Device to Network

1. If your broadband router is close to your Wireless Beamer Adapter, connect an Ethernet cable from an available Ethernet port of the router to the WAN port of the WBA device.



### Attaching WBA to Power

1. Plug the power cord into the WBA and power outlet.
2. You should see the following welcome screen about a minute after powering up the WBA device (you may have to change the TV input setting using the TV remote control).



## 4. Software Setup

### Installing WBA Software

1. Before you install the WBA software, remove any earlier version installed on your PC by clicking on WBA Uninstall located under Windows Start -> All Programs.
2. Insert the Software CD that came with the WBA. Click "Install Utility", and the Setup program should automatically start.
3. The software will automatically start to install. When Installing Mirror Display driver, this will cause a black screen to appear for a few seconds.
4. Only Windows 2000: Click Reboot when the installation is complete.  
Windows XP and Vista: Click Finish when the install is complete.

### Uninstalling WBA Software

1. Click Start and navigate to All Programs -> WBA
2. Click Uninstall and the software removal process will begin.
3. When the uninstallation process is finished, reboot your PC.

## 5. Software Application

### Configuring WBA Software

When the WBA software connects to the device for the very first time after initial installation, it automatically launches the Configuration Wizard. The Configuration Wizard allows you to select various options for Internet Connections as well as personal preferences and protection settings such as user passwords and display access codes. You can also change your WBA settings using the WBA Configuration Wizard any time you run the software subsequently.



1. The Tutorial section (on the right of the screen) describes the settings available on that screen.
2. Click the Next or Back buttons at any time to move through the Configuration Wizard screens.
3. The following is a description of the Wizard screens:

**Conn Summary:** shows cable connection, and allows you to select a different output.

**Password Setup:** allows you to create a password to keep others from changing your configuration. The Password restricts access to Advance and Internet Settings. Password can be up to 32 characters in length.

**Device Settings:** allows you to change the wireless device name broadcast by your WBA device.

**Wireless Settings:** allows you to select wired or wireless Internet connection, and to enable secure wireless access by entering an encryption key. If your Broadband Router uses secure wireless communication, you need to use the same key as the one in use by the Broadband Router in order to access the Internet.

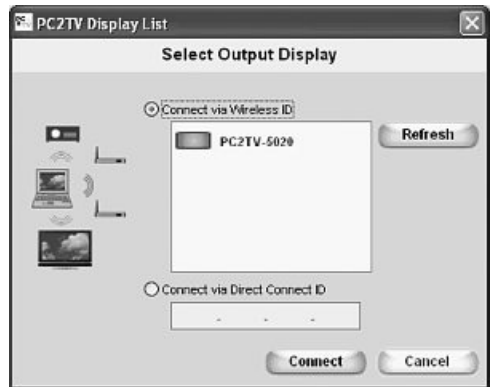
If your configuration matches B, select "Connect to external networks using wired Ethernet" option. If you are using Configuration C or D, select "None" as an option in Wireless Settings window. In this case, all the Internet accesses take place directly between the PC and the Broadband Router.

**Summary:** displays summary of the selections made and connections between various devices.

4. Click the Cancel button at the bottom of the screen to exit the Configuration Wizard at any time. To save any configuration changes you have to click Finish.

### Starting and Stopping the WBA Software

1. Click on the WBA icon on the Windows desktop (or from Start/All Programs) – the application automatically scans for WBA devices.
2. If only one WBA device is detected, connection between the PC and the WBA device will be made automatically.
  - The default is set for Connect via Wireless ID (Configurations A and B).
  - If you want to connect over Ethernet instead, click on "Connect via Direct connect ID", and click on the Connect button.



- If multiple WBA devices are detected, the Wireless Display List is presented. Select the device you want, and click on the Connect button. If your display is not shown on the list, press the "Refresh" button until it appears.
- Once connected, it will display, "Connected to: WBA-xxxx" in the main application.
- To change from one WBA device to another, or to change between wired and wireless connection with your PC, click on Select TV, which will bring up the WBA Display List.
- To stop the display and disconnect your PC from the WBA device, click on the "X" button on the upper right corner of the WBA application window, and click on OK when prompted.

### Changing Video and Network Settings

1. The Main menu of the WBA application provides the following information about the WBA connection:



**Connection Status** – displays the name for the connected WBA device.

**Signal Strength** – four or more green bars indicate a strong wireless signal.

**Display Modes** – changes the display mode.

**Video** – select this when viewing a video.

This provides high frame rate at lower resolution.

**Photo** – select this when viewing graphics or photos.

This provides higher resolution at a lower frame rate.

**Hide/Mute** – select this when you want to mute the audio and display a blank screen.

**Extended View** – allows you to configure settings.

This is displayed by clicking on double arrow symbol in the bottom left hand side of the main window.

## 6. Troubleshooting Tips

**If the WBA device does not appear on the list of available wireless networks.**

- Exit the WBA application.
- Open the wireless utility and connect to the WBA device.
- Re-launch the WBA application.

**If your video performance is sluggish.**

Check your PC documentation and disable settings that bring down CPU performance when operating on battery power.

**If the video pauses at the beginning of the sequence for less than two seconds and restarts.**

This is normal behavior while the system is optimizing settings to optimize video compression and display performance.

**If the DVD playback is jerky or video does not display on the PC screen.**

We recommend Power-DVD player for optimal viewing experience.

## 7. Contact- and Supportinformation

**If products are defective:**

Please contact your dealer or Hama Product Consulting if you have any product claims.

**Internet / World Wide Web:**

Product support, new drivers or product information can be found at [www.hama.com](http://www.hama.com)

**Support Hotline – Hama Product Consulting:**

Tel. +49 (0) 9091 / 502-115

Fax +49 (0) 9091 / 502-272

E-mail: [produktberatung@hama.de](mailto:produktberatung@hama.de)

**Note:**

This product may only be used in Germany, Austria, Switzerland, France, England, Belgium, Spain, Holland, Italy, Denmark, Hungary, Poland, Sweden, Portugal, Luxemburg, Ireland, Greece, the Czech Republic, Slovakia and Finland.

See [www.hama.com](http://www.hama.com) for the declaration of conformity with R&TTE Directive 99/5/EC.

Die Konformitätserklärung nach der R&TTE Richtlinie 99/5/EG finden Sie unter [www.hama.com](http://www.hama.com)

See [www.hama.com](http://www.hama.com) for declaration of conformity according to R&TTE Directive 99/5/EC guidelines

La déclaration de conformité à la directive R&TTE 99/5/CE se trouve sur [www.hama.com](http://www.hama.com)

La declaración de conformidad según la directiva R&TTE 99/5/CE la encontrará en [www.hama.com](http://www.hama.com)

De conformiteitsverklaring conform de R&TTE-richtlijn 99/5/EG vindt u onder [www.hama.com](http://www.hama.com)

La dichiarazione di conformità secondo la direttiva R&TTE 99/5/CE è disponibile sul sito [www.hama.com](http://www.hama.com)

A declaração de conformidade segundo a directiva R&TTE 99/5/CE pode ser consultada em [www.hama.com](http://www.hama.com)

Konformitetsförklaring enligt R&TTE riktlinje 99/5/EG finner du på [www.hama.com](http://www.hama.com)

- (D) Radio- ja telepäätelaitteita koskevan direktiivin 99/5/EY mukainen vaatimustenmukaisuusvakuutus löytyy osoitteesta [www.hama.com](http://www.hama.com) (FIN)
- (GB) Overensstemmelseserklæringen i henhold til R&TTE-retningslinjerne finder du under [www.hama.com](http://www.hama.com) (DK)
- (F) Déclaration de conformité selon la directive R&TTE 99/5/CE disponible sur le site internet [www.hama.com](http://www.hama.com) (PL)
- (E) A megfeleléségi követelmények megegyeznek az R&TTE Irányelvek 99/5/EG ajánlásaival [www.hama.com](http://www.hama.com) (H)
- (NL) Prohlášení, o shodě podle směrnice R&TTE 99/5/EG, naleznete na [www.hama.com](http://www.hama.com) (CZ)
- (I) Prehlásenie o zhode podľa R&TTE smernice 99/5/EG nájdete na [www.hama.com](http://www.hama.com) (SK)
- (P) Τη δήλωση συμμόρφωσης σύμφωνα με την οδηγία 99/5/EK περί R&TTE θα τη βρείτε στη διεύθυνση [www.hama.com](http://www.hama.com) (GR)
- (S)



Software: (GB)

- (D) Dieses Gerät darf nur in den folgenden Ländern betrieben werden:  
(GB) The operation of this device is only allowed in the following countries:  
(F) Cet appareil ne peut être utilisé que dans les pays suivants:  
(E) Este aparato se puede utilizar sólo en los países siguientes:  
(I) L'uso di questo apparecchio é ammesso soltanto nei seguenti Paesi:  
(NL) Dit apparaat mag alleen gebruikt worden in de volgende landen:  
(DK) Dette apparat må kun benyttes i følgende lande:  
(PL) Urządzenie sprzedawane jest tylko w następujących krajach:  
(H) Ez a készülék a következő országokban üzemeltethető:  
(CZ) Tento přístroj se smí používat pouze v následujících zemích:  
(SK) Toto zariadenie sa môže používať len v týchto krajinách:  
(S) Denna apparat får endast användas i följande länder:  
(FIN) Tätä laitetta saa käyttää vain.  
(P) Este aparelho pode ser utilizado somente na.  
(GR) Αυτή η συσκευή επιτρέπεται να λειτουργεί μόνο στις παρακάτω χώρες:  
(D) (A) (CH) (GB) (F) (B) (I) (NL) (E) (DK) (S) (H) (PL) (CZ) (SK) (GR) (P) (FIN) (L) (IRL)

**D Hinweis zum Umweltschutz:**



Ab dem Zeitpunkt der Umsetzung der europäischen Richtlinie 2002/96/EU in nationales Recht gilt folgendes:

Elektrische und elektronische Geräte dürfen nicht mit dem Hausmüll entsorgt werden. Der Verbraucher ist gesetzlich verpflichtet, elektrische und elektronische Geräte am Ende ihrer Lebensdauer an den dafür eingerichteten, öffentlichen Sammelstellen oder an die Verkaufsstelle zurückzugeben. Einzelheiten dazu regelt das jeweilige Landesrecht. Das Symbol auf dem Produkt, der Gebrauchsanleitung oder der Verpackung weist auf diese Bestimmungen hin. Mit der Wiederverwertung, der stofflichen Verwertung oder anderer Formen der Verwertung von Altgeräten leisten Sie einen wichtigen Beitrag zum Schutz unserer Umwelt. In Deutschland gelten oben genannte Entsorgungsregeln, laut Batterieverordnung, für Batterien und Akkus entsprechend.

**GB Note on environmental protection:**



After the implementation of the European Directive 2002/96/EU in the national legal system, the following applies:

Electrical and electronic devices may not be disposed of with domestic waste. Consumers are obliged by law to return electrical and electronic devices at the end of their service lives to the public collecting points set up for this purpose or point of sale. Details to this are defined by the national law of the respective country. This symbol on the product, the instruction manual or the package indicates that a product is subject to these regulations. By recycling, reusing the materials or other forms of utilising old devices, you are making an important contribution to protecting our environment.

**F Remarques concernant la protection de l'environnement:**



Conformément à la directive européenne 2002/96/CE, et afin d'atteindre un certain nombre d'objectifs en matière de protection de l'environnement, les règles suivantes doivent être appliquées. Elles concernent les déchets d'équipement électriques et électroniques. Le pictogramme "picto" présent sur le produit, son manuel d'utilisation ou son emballage indique que le produit est soumis à cette réglementation. Le consommateur doit retourner le produit usagé aux points de collecte prévus à cet effet. Il peut aussi le remettre à un revendeur. En permettant enfin le recyclage des produits, le consommateur contribuera à la protection de notre environnement. C'est un acte écologique.

**E Nota sobre la protección medioambiental:**



Después de la puesta en marcha de la directiva Europea 2002/96/EU en el sistema legislativo nacional, se aplicara lo siguiente: Los aparatos eléctricos y electrónicos, así como las pilas y las pilas recargables, no se deben evacuar en la basura doméstica. El usuario está legalmente obligado a llevar los aparatos eléctricos y electrónicos, así como pilas y pilas recargables, al final de su vida útil a los puntos de recogida comunales o a devolverlos al lugar donde los adquirió. Los detalles quedaran definidos por la ley de cada país. El símbolo en el producto, en las instrucciones de uso o en el embalaje hace referencia a ello. Gracias al reciclaje, al reciclaje del material o a otras formas de reciclaje de aparatos usados, contribuye Usted de forma importante a la protección de nuestro medio ambiente.

**NL Notitie aangaande de bescherming van het milieu:**



Ten gevolge van de invoering van de Europese Richtlijn 2002/96/EU in het nationaal juridisch systeem, is het volgende van toepassing:

Elektrische en elektronische toestellen mogen niet weggegooid worden tesamen met het huishoudelijk afval.

Consumenten zijn wettelijk verplicht om elektrische en elektronische apparaten op het einde van gebruik in te dienen bij openbare verzamelplaatsen speciaal opgezet voor dit doeleinde of bij een verkooppunt. Verdere specificaties aangaande dit onderwerp zijn omschreven door de nationale wet van het betreffende land. Dit symbool op het product, de gebruiksaanwijzing of de verpakking duidt erop dat het product onderworpen is aan deze richtlijnen. Door te recycleren, hergebruiken van materialen of andere vormen van hergebruiken van oude toestellen, levert u een grote bijdrage aan de bescherming van het milieu.

**I Informazioni per protezione ambientale:**



Dopo l'implementazione della Direttiva Europea 2002/96/EU nel sistema legale nazionale, ci sono le seguenti applicazioni:

I dispositivi elettrici ed elettronici non devono essere considerati rifiuti domestici. I consumatori sono obbligati dalla legge a restituire i dispositivi elettrici ed elettronici alla fine della loro vita utile ai punti di raccolta pubblici preposti per questo scopo o nei punti vendita.

Dettagli di quanto riportato sono definiti dalle leggi nazionali di ogni stato. Questo simbolo sul prodotto, sul manuale d'istruzioni o sull'imballo indicano che questo prodotto è soggetto a queste regole.

**P Nota em Protecção Ambiental:**



Após a implementação da directiva comunitária 2002/96/EU no sistema legal nacional, o seguinte aplica-se:

Todos os aparelhos eléctricos e electrónicos não podem ser despejados juntamente com o lixo doméstico. Consumidores estão obrigados por lei a colocar os aparelhos eléctricos e electrónicos sem uso em locais públicos específicos para este efeito ou no ponto de venda.

Os detalhes para este processo são definidos por lei pelos respectivos países. Este símbolo no produto, o manual de instruções ou a embalagem indicam que o produto está sujeito a estes regulamentos. Reciclando, reutilizando os materiais dos seus velhos aparelhos, esta a fazer uma enorme contribuição para a protecção do ambiente.

**S Not om miljöskydd:**



Efter implementeringen av EU direktiv 2002/96/EU i den nationella lagstiftningen, gäller följande:

Elektriska och elektroniska apparater får inte avyttras med hushållsavfall. Konsumenter är skyldiga att återlämna elektriska och elektroniska apparater vid slutet av dess livslängd till, för detta ändamål, offentliga uppsamlingsplatser. Detaljer för detta definieras via den nationella lagstiftningen i respektive land. Denna symbol på produkten, instruktionsmanualen eller på förpackningen indikerar att produkten innefattas av denna bestämmelse. Genom återvinning och återanvändning av material bidrar du till att skydda miljön och din omgivning.

**FIN Ympäristönsuojelua koskeva ohje:**



Siitä lähtien, kun Euroopan unionin direktiivi 2002/96/EU otetaan käyttöön kansallisessa lainsäädännössä, pätevät seuraavat määräykset:

Sähkö- ja elektroniikkalaitteita ei saa hävittää talousjätteen mukana. Kuluttajalla on lain mukaan velvollisuus toimittaa sähkö- ja elektroniikkalaitteet niiden käyttöönsä päätyttyä niille varattuun julkisiin keräyspisteisiin tai palauttaa ne myyntipaikkaan. Tähän liittyvästä yksityiskohdistaa säädetään kulloisenkin osavaltion laissa. Näistä määräyksistä mainitaan myös tuotteen symbolissa, käyttöohjeessa tai pakkauksessa. Uudelleenkäyttöllä, materiaalien uudelleenkäyttöllä tai muilla vanhojen laitteiden uudelleenkäyttövoilla on tärkeä vaikutus yhteisen ympäristömme suojelussa.

**PL Wskazówki dotyczące ochrony środowiska:**



Od czasu wprowadzenia europejskiej dyrektywy 2002/96/EU do prawa narodowego obowiązują następujące ustalenia:  
Urządzeń elektrycznych i elektronicznych nie należy wyrzucać wraz z innymi odpadami domowymi. Użytkownik zobowiązany jest, niepotrzebne lub zniszczone urządzenia elektryczne oddać do punktu zbiórki lub do sprzedawcy. Szczegółowe kwestie regulują przepisy prawne danego kraju. Informuje o tym symbol przekreślonego kosza umieszczony na opakowaniu. Segregując śmieci pomagasz chronić środowisko naturalne.

**H Környezetvédelmi tudnivalók:**



Az európai irányelvek 2002/96/EU ajánlása szerint, a megjelölt időponttól kezdve, minden EU-s tagállamban érvényesek a következők:  
A leselejtezett elektromos és elektronikus készülékeket nem szabad a háztartási szemétkébe dobni. Az elhasznált és működésképtelen elektromos és elektronikus készülékek gyűjtésére törvényi előírás kötelez mindenkit, ezért azokat el kell szállítani egy kijelölt gyűjtő helyre vagy visszavinni a vásárlás helyére. A termék csomagolásán feltüntetett szimbólum egyértelmű jelzést ad erre vonatkozóan a felhasználónak. A régi készülékek begyűjtése, visszaváltása vagy bármilyen formában történő újra hasznosítása közös hozzájárulás környezetünk védelméhez.

**CZ Ochrana životního prostředí:**



Evropská směrnice 2002/96/EU stanovuje:  
Elektrické a elektronické přístroje se nesmí vřazovat do domácího odpadu.  
Elektrické a elektronické přístroje musí být zlikvidovány podle zákona na místech k tomu určených. Recyklaci nebo jiným způsobem zpracování výrazně přispíváte k ochraně našeho životního prostředí!

**SK Ochrana životného prostredia:**



Európska smernica 2002/96/EU stanovuje: Elektrické a elektronické zariadenia sa nesmú vyhazovať do domáceho odpadu.  
Spotrebitel' je zo zákona povinný zlikvidovať elektrické a elektronické zariadenia na miesta k tomu určené. Symbolizuje to obrázok v návođe na použitie, alebo na balení výrobku. Recykláciou, alebo inými formami využitia starých prístrojov prispievate v značnej miere k ochrane vášho životného prostredia.

**GR Υπόδειξη σχετικά με την προστασία περιβάλλοντος:**



Από τη στιγμή που η Ευρωπαϊκή Οδηγία 2002/96/ΕΕ ενσωματώνεται στο εθνικό δίκαιο ισχύουν τα εξής:  
Οι ηλεκτρικές και ηλεκτρονικές συσκευές δεν επιτρέπεται να πετιούνται στα σκουπίδια. Ο καταναλωτής υποχρεούται δια νόμου να επιστρέφει τις ηλεκτρικές και ηλεκτρονικές συσκευές στο τέλος της ζωής τους στα ειδικά προβλεπόμενα σημεία συγκέντρωσης ή στα καταστήματα αγοράς. Οι λεπτομέρειες ρυθμίζονται στη σχετική νομοθεσία. Το σύμβολο πάνω στο προϊόν, στο γυαλί ή στη συσκευασία παραπέμπει σε αυτές τις διατάξεις. Με την επαναχρησιμοποίηση, την ανακύκλωση των υλικών ή με άλλους τρόπους αξιοποίησης των παλιών συσκευών συμμετέχετε ενεργά στη προστασία του περιβάλλοντός μας. Στη Γερμανία ισχύουν αντίστοιχα οι παραπάνω κανόνες απόρριψης σύμφωνα με τον κανονισμό για μπαταρίες και συσσωρευτές.

**RUS Охрана окружающей среды:**



С момента перехода национального законодательства на европейские нормы 2002/96/EU действительно следующее:  
Электрические и электронные приборы запрещается утилизировать вместе с обычным мусором. Потребитель, согласно закону, обязан утилизировать электрические и электронные приборы в специально предназначенных для этого пунктах сбора, либо пунктах продажи. Детальная регламентация этих требований осуществляется соответствующим местным законодательством. Необходимость соблюдения данных предписаний обозначается особым знаком на изделии, инструкции по эксплуатации или упаковке. При переработке, повторном использовании материалов или при другой форме утилизации бывших в употреблении приборов особое внимание уделяйте охране окружающей среды. В соответствии с предписаниями по обращению с батареями, в Германии вышеназванные нормы действуют для утилизации батарей и аккумуляторов.

**TR Çevre koruma uyarısı:**



Avrupa Birliği Direktifi 2002/96/EU ulusal yasal uygulamalar için de geçerli olduğu tarihten itibaren:  
Elektrikli ve elektronik cihazlar normal evsel çöpe atılmamalıdır. Tüketiciler için, artık çalışmayan elektrikli ve elektronik cihazları, kamuya ait toplama yerlerine götürme veya satın alıncıları yerlere geri verme yasal bir zorunluluktur. Bu konu ile ilgili ayrıntılar ulusal yasalarla düzenlenmektedir. Ürün üzerinde, kullanma kılavuzunda veya ambalajda bulunan bu sembol tüketiciyi bu konuda uyarır. Eski cihazları geri kazanımı, yapıldıkları malzemelerin değerlendirilmesi veya diğer değerlendirme şekilleri ile, çevre korumasına önemli bir katkıda bulunursunuz. Yukarıda adı geçen atık toplama kuralları Almanya'da piller ve aküler için de geçerlidir.

**DK Anvisninger til beskyttelse af miljøet:**



Efter implementeringen af det europæiske direktiv 2002/96/EU i det nationale lovgivningssystem gælder følgende:  
Elektriske og elektroniske apparater må ikke bortskaffes med husholdningsaffald. Forbrugeren er ved afslutningen af elektriske og elektroniske apparaters levetid lovmæssigt forpligtet til at aflevere disse på de dertil indrettede offentlige indsamlingssteder eller hos sælgeren. Enkeltheder vedrørende dette fastlægges af de respektive landes nationale lovgivning. Dette symbol på produktet, betjeningsvejledningen eller emballagen viser, at produktet er underlagt disse bestemmelser. Med genanvendelse, genanvendelse af materialer eller andre former for genbrug af gamle apparater yder du et vigtigt bidrag til beskyttelse af vores miljø.

**N Informasjon om beskyttelse av miljøet:**



Efter implementering av EU-direktiv 2002/96/EU i det nasjonale lovverk, er følgende gjort gjeldende:  
Elektrisk og elektronisk utstyr skal ikke kastes sammen med husholdningsavfall.  
Forbrukere er pålagt ved lov å returnere elektrisk og elektronisk utstyr ved enden av levetiden til offentlige oppsamlingspunkter, oppsatt for dette formål eller til utsalgssteder for slikt utstyr. Detaljer rundt dette er definert i lovverket i det respektive land. Dette symbolet på produktet, bruksanvisningen eller forpakningen forteller at et produkt faller inn under disse betingelsene. Ved resirkulering, gjenbruk av materialet eller på andre måter å nyttiggjøre gammelt utstyr bidrar du på en viktig måte til å beskytte vårt felles miljø!

***hama***<sup>®</sup>

Hama GmbH & Co KG  
D-86651 Monheim/Germany  
[www.hama.com](http://www.hama.com)